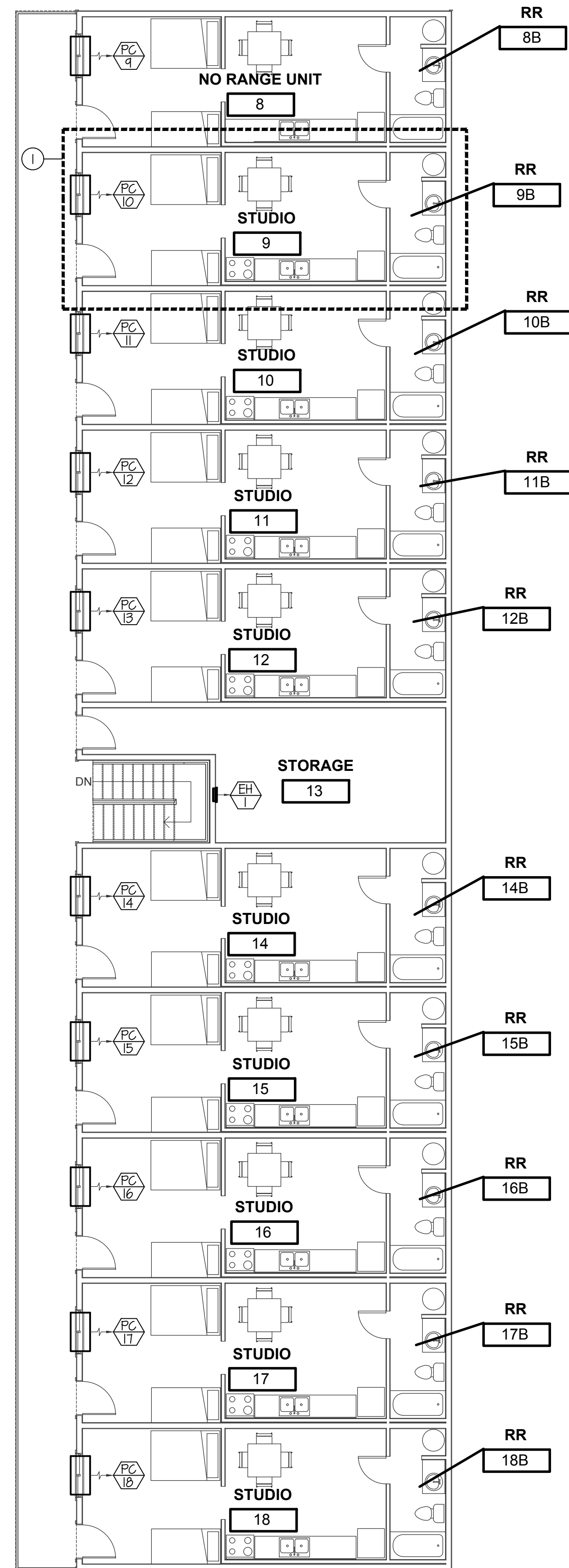


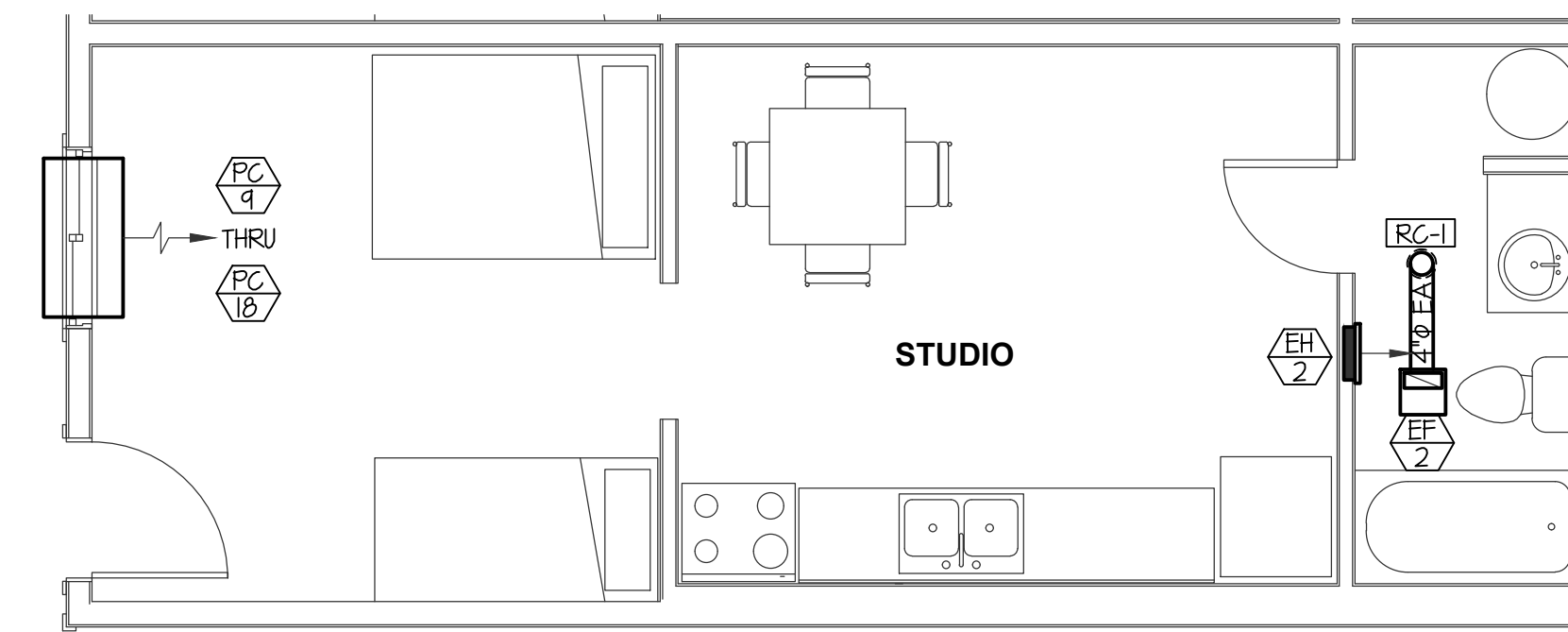
MAIN LEVEL MECHANICAL FLOOR PLAN

SCALE: 1/8" = 1'-0"



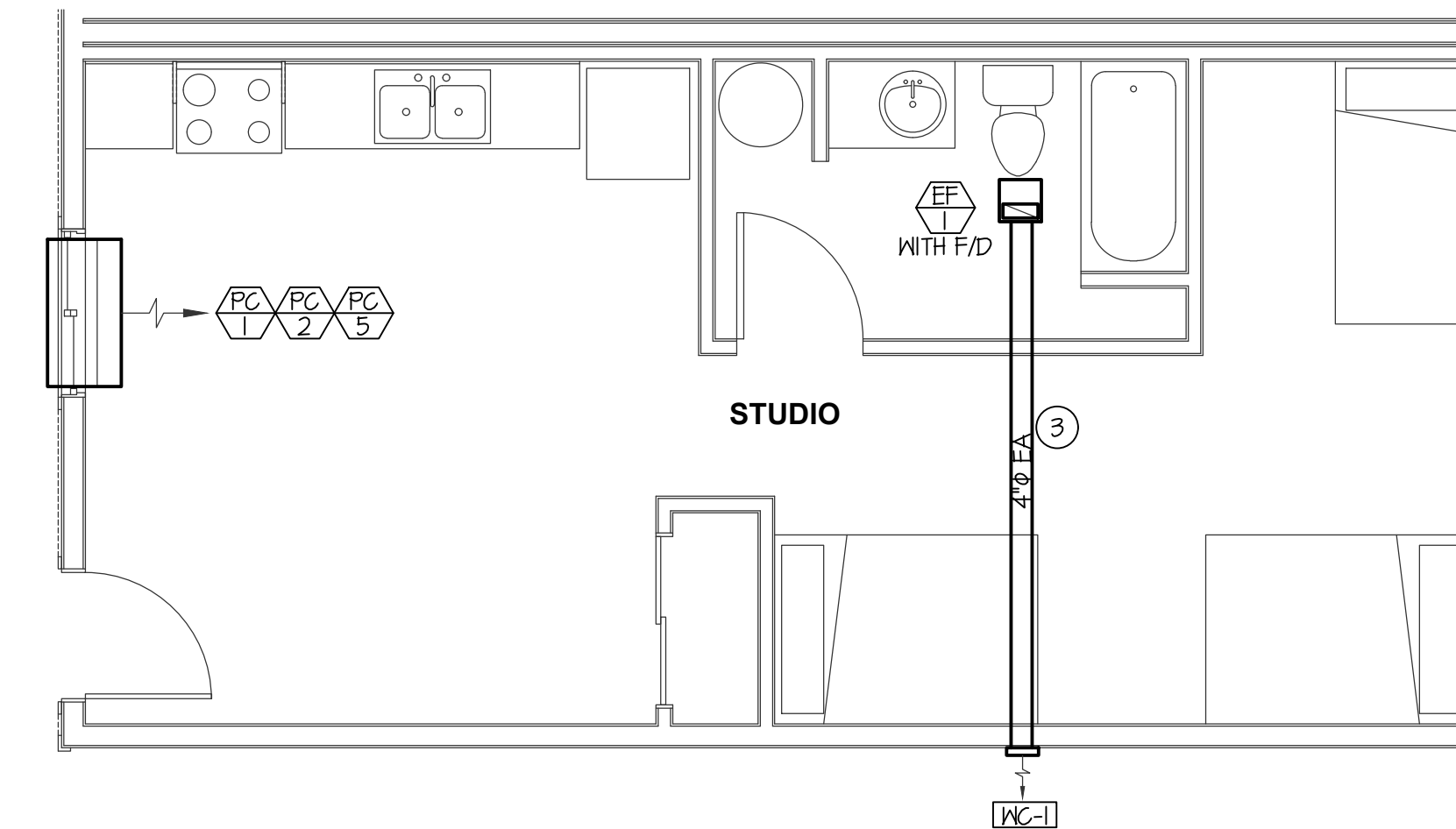
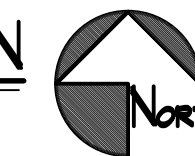
SECOND LEVEL MECHANICAL FLOOR PLAN

SCALE: 1/8" = 1'-0"



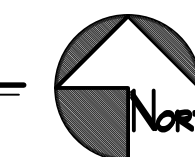
SECOND LEVEL TYP. MECHANICAL FLOOR PLAN

SCALE: 1/4" = 1'-0"



MAIN LEVEL TYP. MECHANICAL FLOOR PLAN

SCALE: 1/4" = 1'-0"



PLAN NOTES:

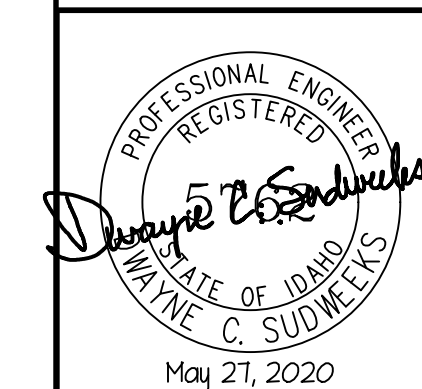
- 1 SEE LARGE SCALE PLANS THIS SHEET.
- 2 RUN 4" DUCT INTO WALL AND RUN TO OUTSIDE WALL GAP IN CEILING OR WALL SPACE AS REQUIRED. NO BACK DRAFT DAMPERS ALLOWED. COORDINATE WITH PLUMBING FOR WALL CLEARANCES. SEE TYPICAL INSTALL DETAILS ON SHEET M2-0. VERIFY SIZE OF REQUIRED EXHAUST DUCT AS RECOMMENDED BY MANUFACTURE. ADJUST WALL GAP AND ROUTE AS REQUIRED.
- 3 COORDINATE WITH PLUMBING TO ROUTE 4" EXHAUST DUCT AS REQUIRED AROUND WASTE LINES.

MECHANICAL LEGEND

SYMBOL	DESCRIPTION
Ⓢ	ELECTRONIC THERMOSTAT
Ⓜ	EQUIPMENT SYMBOL
HD	HAND DAMPER
Ⓜ	ROUND BRANCH DUCT WITH HAND DAMPER
IFD	INSULATED FLEXIBLE DUCT
Ⓜ	RETURN AIR OR EXHAUST GRILLE
Ⓜ	CEILING DIFFUSER
Ⓜ	ROOF MOUNTED UPBLAST EXHAUST FAN

GENERAL NOTES:

- A- THE CONTRACTOR SHALL CHECK AND VERIFY ALL DIMENSIONS AND CONNECTIONS ON THE JOB SITE. ALL WORK SHALL BE EXECUTED FROM MEASUREMENTS TAKEN AT THE SITE.
- B- THE MECHANICAL CONTRACTOR SHALL BE RESPONSIBLE TO INSURE PROPER CODE CLEARANCES FOR ELECTRICAL AND MECHANICAL ACCESS WHEN INSTALLING ANY EQUIPMENT SUPPLIED BY THE MECHANICAL CONTRACTOR.
- C- IT IS CRITICAL THAT THIS CONTRACTOR COORDINATE EQUIPMENT LOCATIONS WITH PIPING, DUCTWORK, ELECTRICAL CONDUIT AND BUILDING STRUCTURE TO INSURE CODE COMPLIANCE.
- D- CEILING DIFFUSERS ARE SHOWN IN APPROXIMATE LOCATIONS. REFER TO LIGHTING PLANS AND REFLECTED CEILING PLAN FOR EXACT LOCATIONS.
- E- DUCT DIMENSIONS CALLED OUT ON DRAWINGS ARE INSIDE FREE AREA DIMENSIONS. ACOUSTICAL DUCT LINER ARE TO BE ADDED TO OVERALL MEASUREMENTS.
- F- ALL DUCTWORK AND PIPING WHICH PASSES THRU FIRE RATED WALLS TO BE FIRE STOPPED WITH APPROVED FOAM OR SEALANT. REFER TO SPECIFICATIONS FOR APPROVED MANUFACTURES.



Engineered Systems Associates
 1355 EAST CENTER
 POCATELLO, IDAHO 83201
 PHONE: (208) 233-0501
 FAX: (208) 233-0529
 EMAIL: eso@engsystems.com
 ESA JOB NUMBER: 19095

A NEW FACILITY FOR:
VALLEY HOUSE
 125 ROSE ST., TWIN FALLS, ID 83301
MECHANICAL FLOOR PLAN

Laughlin Ricks Architecture
 architecture/planning
 935 Shoshone Street North * Twin Falls, Idaho 83301
 (208) 736-8050 Fax: (208) 733-0950

DATE: _____
 Drawn: _____
 Checked: _____
M1-0